



MONTHLY MEMBERSHIP PROGRESS REPORT

District 4 C1

Results as of: 4/30/2017

GMT: Gary Wong

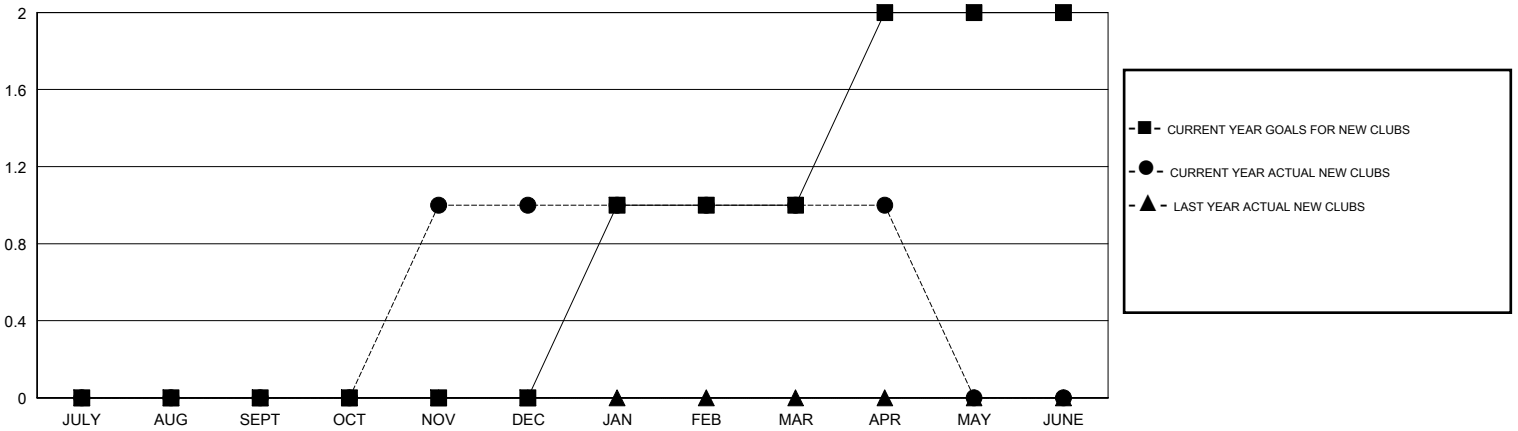
LOCATION CALIFORNIA

GMT CA

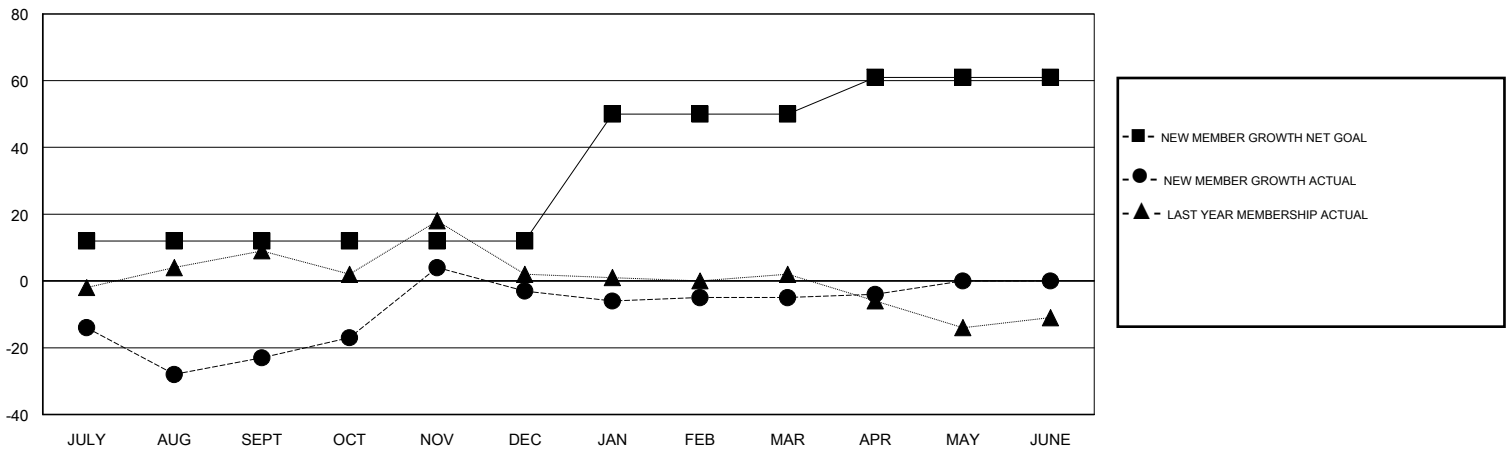
Clubs			
RESULTS FOR 2016-2017			
QUARTER	NEW CLUB GOAL	NEW CLUBS	DROPPED CLUBS
JULY/AUG/SEPT	0	0	0
OCT/NOV/DEC	0	1	0
JAN/FEB/MAR	1	0	0
APR/MAY/JUNE	1	0	0

Members			
RESULTS FOR 2016-2017			
QUARTER	NEW MEMBER GROWTH NET GOAL (not reinstated or transfers)	NEW MEMBER GROWTH ACTUAL (not reinstated or transfers)	DROPPED MEMBERS ACTUAL (including transfers)
JULY/AUG/SEPT	12	28	51
OCT/NOV/DEC	0	36	16
JAN/FEB/MAR	38	31	33
APR/MAY/JUNE	11	7	6

GOALS AND ACTUAL NEW CLUBS CUMULATIVE



GOALS AND ACTUAL MEMBERS CUMULATIVE



DROPPED CLUBS: 0	33 CLUBS OF 47 ADDED 1 OR MORE NEW MEMBERS	<u>GENDER DISTRIBUTION</u>	
DROPPED MEMBERS		MALE	731 (67.94%)
DECEASED	10	FEMALE	345 (32.06%)
CLUB CANCELLED	0	TOTAL FAMILY UNIT MEMBERS	227
OTHER	96	FAMILY MEMBERS PAYING HALF DUES	116
TOTAL	106		

[CLICK HERE FOR CUMULATIVE MEMBERSHIP DATA](#)